

Amprobe AC Power Datalogger/Recorder

- Voltage, Current, Power, and Energy Measurements
- Three Voltage and Four Current Channels
- Single- or Three-Phase Capability; 2-, 3-, or 4-Wire
- Includes Software for Display, Analysis, and Reporting

Perfect for Plant-Wide Testing and Troubleshooting

Whether you need to troubleshoot a line, perform routine system-wide checks, determine power consumption of individual electrical devices, or profile your energy usage, the 23151E is the right tool. This self-contained instrument measures a broad range of electrical parameters: AC voltage and current—true RMS, RMS min/max/avg, peak; power—watts, vars, VA, power factor; and energy—kilowatt hours (kWh) and demand (kW). Collected data can be viewed in the field on the built-in display screen and later downloaded to a PC via the included software for storage, analysis, or reporting.

The 23151E's four pre-set configurations let you check single- or three-phase; two-, three-, or four-wire systems. Its voltage range is 5 to 600V, and current range is 1 to 1000A, both accurate to $\pm 1\%$ of reading. Three voltage channels plus common and four current channels are offered; high/low limits for each are user-programmable.

Recording modes and rates are selectable. Record length is dependent on mode, rate, interval, and number of selected data points. The 640k RAM memory is backed up by a lithium battery to prevent data loss in case of power failure.

Several other features enhance this exceptional instrument: auto-ranging; multiple language selection; real-time clock; battery backup power; and easy-to-read, backlit display with adjustable contrast. Its housing is constructed of rugged, injection-molded ABS plastic and is flame retardant, water-resistant, and corrosion proof.

Each Unit Includes: Four test leads, banana plug with alligator clip, 1000 VRMS/10A max, current transducers (4 included) DM-CT, 1-1000A, DMII™ View software, and operating instructions.

NOTE: PC Software & instructions are available at



▲ DM-II PRO

Specifications

Inputs:	V1, V2, V3, COM; I1, I2, I3, I4
Ranges:	5 to 600 VAC; 1 to 1000 AAC (True RMS)
Accuracy:	$\pm 1\%$ of rdg, voltage and current
Measured Parameters	
Voltage/Current:	True RMS, RMS max, RMS min, RMS avg, Peak
Power:	Watts, Vars, VA, IPF
Energy:	kWh, kW
Display:	Backlit LCD, 160 x 160 pixels, adjustable contrast
Languages:	Selectable English, German, Spanish, Italian, French
Setup Configurations:	1 ϕ 2W, 1 ϕ 3W, 3 ϕ 3W Straight Delta, 3 ϕ 4W Wye
Sample Rate:	7.68 kHz, 128 samples/cycle per channel, 8 channels total
Recording Rates:	Electable 1, 5, 15, 30 sec; 1, 5, 15, 30 min 15 min and 30 min intervals for kW measurements
Recording Modes:	Normal or continuous (wrap around)
Digital Output:	Optically isolated RS-232 serial interface
Power Supply:	Selectable 120/240 VAC, 50/60 Hz, with battery backup (six D alkaline cells, not included)
Size/Weight:	7.5 x 17.5 x 11.6" HWD/19 lbs

Ordering Information

Order #	Mfg #	Description	Price
MP23151E	DN-II PRO	AC Datalogger/Recorder	
MPACF-3000DM-A	ACF-3000DM-A	3000A Flexible Current Transducer	

NOTE: For current above 1000A, ACF3000 (300A/3000A) is required.

Transcat Accredited Calibration with Data	CALL
Transcat Accredited Calibration without Data	CALL

NEW Amprobe DM-III Power Digital Recorder/Data Logger

- Comes as a Complete Kit, CT's and PC Software are Included with Product
- Works with Single and Three Phase Systems (Y and delta)
- Detects and Records Voltage Anomalies, Sags and Surges
- Built in Scope Displays Waveforms
- Records up to 64 Parameters (single or three phase) Simultaneously
- Manual and Programmable Recording Start
- Password Protection
- Selectable Fundamental Frequency of 50 or 60 Hz
- Special Data Compression System and User Selectable Rates Allow Recording from Several Hours to Several Years
- Download Capabilities, Windows Compatible PC Software
- Line or Battery Powered
- Safety: CATIII 600V Phase to Phase, CATIII 300V Phase to Ground, EN 61010-1+A2(1996)



Each Unit Includes: Carrying case HW1254A, External power supply 12VDC DM-EXTPS, Clamp 1000A/1V DM-CT-HT, Test leads and alligator clips (set of 4) KITENERGY3, PC Software Toplink, Special RS-232 Computer Cable C232NG1, Instruction Manual www.amprobe.com

E

Specifications

AC Voltage including Sags and Surges	0 - 600V
AC Current	0 - 1000A (expandable to 3000A with optional CT's)
Power	Working (W), Reactive (VAR) and Apparent (VA)
Power Factor	0.00 - 1.00
Energy	Working (kWh), Reactive (VARh) and Apparent (VAh)
Peak Demand	kW
Harmonics	Up to 49th
Frequency measurement	57 to 63.6 Hz at 60Hz fundamental 47 to 53 Hz at 50Hz fundamental
Phase sequence	1-2-3
Co-generation	Computes incoming and outgoing energy
Selectable Fundamental Frequencies	50/60 Hz
Available Recording Time	Several hours to several years depending on setup
Dimensions:	8.9"(L) x 6.5" (La) x 4.1"(H) 225(L) x 165(La) x 105(H) mm
Weight:	3.3 Lb (1.5kg)
Internal power supply:	6 batteries 1.5V series AA LR6
Battery Life:	50 hours
External power supply:	Use only Amprobe power supply Adapter code 9821-120120V.
Display :	dot matrix with backlight
resolution	128 x 128 dots (16384 dots)
dot size	0.5mm x 0.5mm
visible area	2.9" x 2.9" (73mm x 73mm)
Sampling speed:	156.25usec a 50Hz.
No. of samples per period:	128

Ordering Information

Order #	Mfg #	Description	Price
MPDM-III	DM-III	Advanced Digital Recorder/Data Logger	
Accessories (supplied with product)			
MPHW1254A	HW1254A	Carrying case For DM-III	
MPDM-EXTPS	DM-EXTPS	External power supply 12VDC	
MPDM-CT-HT	DM-CT-HT	Current Clamp 1000A/1V	
MPKITENERGY3	KITENERGY3	Test leads and alligator clips (set of 4)	
MPC232NG1	C232NG1	Special RS-232 Computer Cable	

Optional Accessories

Order #	Mfg #	Description	Price
MPACF3000SR	ACF3000SR	3000 Amps I flexible current Probe	
		PC Software Toplink	
		Instruction Manual	

Recorders and Data Acquisition

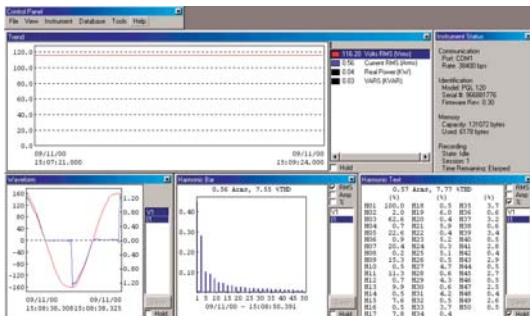
AEMC Power Quality Loggers

Power Quality Analysis Made Simple!

- Portable, Compact Unit – Plugs into Standard US 120V Outlets
- Simple Operation: Plug in, Record, Download and Read
- Measures & Stores Electrical Parameters: V, A, Hz and More
- Measures and Stores Power Parameters: W, VA, Var, Demand, Peak Demand and More
- Measures and Stores Power Quality Parameters: Harmonics, THD (rms and fundamental), K-Factor & More
- Automatically Captures Worst-case Surge, Sag & THD Waveforms for Voltage & Current
- Stores 100 Worst Case Surge & Sag Events Including Time, Date & Duration
- High Accuracy & Resolution: 128 Samples/Cycle, 16 Bit Resolution
- LEDs Indicate Mode of Operation
- Records Up to 12 Data Channels
- Powered from Voltage Input Channel
- Battery Backup Data Integrity During Power Outages for Up to 1 Year. Configuration in Non-volatile Memory.
- Optically Isolated RS-232 Output for Direct Connection to a PC
- IEC 1010, 150V, Cat. III
- Includes DataView™ Lite Analysis and Reporting Software

DataView™ Lite and Professional Data Analysis & Reporting Software

- Display and Analyze Data on Your PC
- Configure All Data Logger Functions and Parameters from Your PC Including Sample Rate, Recording Length, Channel Configuration & More
- Customize Frames, Templates & Reports to Your Exact Needs
- Display Real Time Data on Your PC & Download Previously Recorded Data
- Create & Store a Complete Library of Configurations that Can Be Uploaded to the Logger as Needed
- Zoom In and Out and Pan Through Sections of the Graph to Analyze the Data
- Display Waveforms, Trend Graphs, Harmonic Spectrums and Text Summaries
- Display Surge and Sag Events in High-resolution Waveforms and as Tabular Listings



View data in real time on your PC. Customize the layout to include what's important to you.



Specifications and Ordering Information

Mfg#	2125.01	2125.02	2125.03	2125.04
With Plug				
With Line Card				
Electrical Specifications				
Measurements	True RMS measurement. 128 samples are simultaneously taken for voltage and current channel.			
Voltage				
Range	0 to 140V			
Resolution	0.1V			
Accuracy	±(0.3% of Reading + 0.3V)			
Current				
Range	0 to 15A (70A peak maximum)			
Resolution	0.01A			
Accuracy	±(0.5% of Rdg+0.03A) @ 0.75A to 15A ±0.30A @ < 0.75A			
Frequency (Hz)				
Range	45 to 65Hz			
Resolution	0.01Hz			
Accuracy	0.1Hz			
Harmonics				
Range	Up to 50th for both Voltage & Current			
Resolution	0.1V for Voltage & 0.1A for Current			
Power - Watt/ VA/Var				
Range	0 to 2.1K Watt or VA or Var			
Resolution	0.1W, 0.1VA, 0.1Var			
Accuracy	±(2.0% of Reading + 4x), where x is Watt or VA or Var			
Power & Power Factor				
Resolution	0.01			
Accuracy	±0.03% @ PF/DPF = 1			
Programmable Parameters				
	V, A, Hz, Odd & Even Harmonics(V & A), W, VA, Var, THD (V & A), PF, DF, K-Factor			
Demand	VA, W (10/15/30 minutes or user-definable)			
Peak Demand	Over demand period			
Voltage Sag/Surge	User-definable magnitude			
Input				
Input Channels	1 Voltage/1 Current			
Sample Rate	128 per cycle per channel			
Recording				
Storage Rate	125ms to 7 days			
Recording Session Length	15 minutes to 8 weeks (user programmable)			
Total Memory	128Kb	1Mb	128Kb	1Mb
Date and Time	MM/DD/YY hh/mm/ss.sss			
Surge, Sag & THD Waveform	5	20	5	20
Storage (worst case)	THD Waveform	THD Waveform	THD Waveform	THD Waveform
Order #	MP2125.01	MP2125.02	MP2125.03	MP2125.04
Price				

Accessories

Order #	Mfg #	Description	Price
MP2119.02	2119.02	Soft Carrying Case	