

AEMC Data Logging Made Simple...Simple Logger®

- No User Setup Required — One Button Operation
- Log and Measure Amps RMS, Volts RMS, Temperature, DC Volts, DC Amps
- Autosampling up to 4096/hr — Provides for Maximum Information
- Stores Over 8000 Readings
- Auto-scaling — Provides for Optimum Resolution for the Recording Session
- Innovative Time Extensive Recording™ (TXR™) Technique Provides Continuous Recording for any Length of Time Without User Setup
- Low Power — Records for Up to One Year Using a 9V Alkaline Battery

Software Features

- Windows™ Based Graphing and Analysis Software Included with Each Data Logger
- Statistics Appear on Screen: Max, Min, Avg, Data and Time
- On-Line display of Data Logger Values
- Zoom Capability with Automatic Statistics Update
- Export Data to Spreadsheet and Database Applications
- Print Both Graph and Tabular Listings
- Paste Graphs into Other Applications
- Programmable Scale and Units for all DC Loggers Automatic Selection for AC Loggers

Common Features

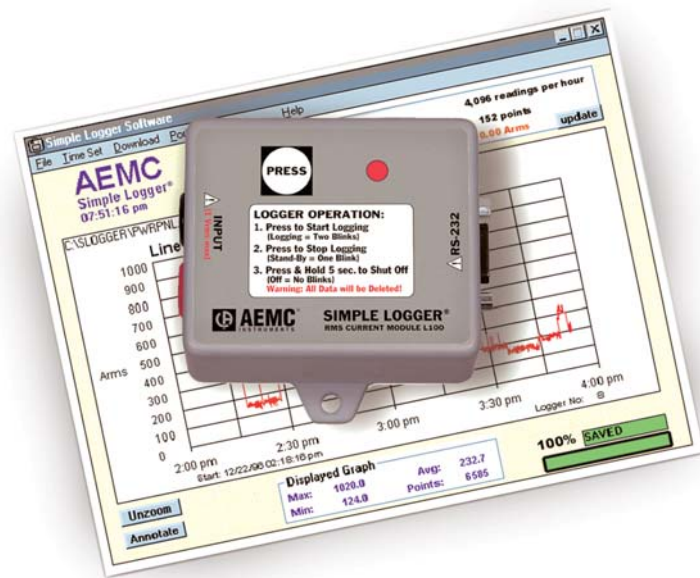
- Sample rate:** 4096/hr maximum
- Resolution:** 8 to 12 bit
- Data storage:** 8192 to 65,536 Readings (depending on model)
- Power:** 9V Alkaline battery
- Output:** RS-232 via DB9 connector
- Indicator:** Red LED flashes once every 2 seconds in STANDBY mode, twice every 2 seconds in LOGGING mode, and is off in OFF mode
- Controls:** One membrane switch used to start and stop recording sessions and to turn the data logger on and off

Environmental

- Operating Temperature:** -4 to +158°F (-20 to +70°C)
- Storage Temperature:** -40 to +176°F (-40 to +80°C)
- Relative Humidity:** 5 to 95% non-condensing

Typical Applications:

- Machine load monitoring
- Metering CT re-sizing
- Temperature monitoring
- HVAC troubleshooting
- Computer room monitoring
- Food storage/Refrigerated freight
- Wave soldering
- Process control monitoring
- Railroad signal monitoring
- Surge/sag monitoring
- Line voltage/Stray voltage monitoring
- Load profiling



Simple Logger® is a single channel, low cost data logger that requires no user setup. It has the ability to automatically adjust both its scale range and its sample rate to optimize the recording session. Simple Logger® includes a Windows™ based software package that can plot, analyze recording data and print graphs and data listings.

The main advantage of Simple Logger® is its ability to perform a wide variety of recording tasks with high resolution and accuracy without the need for user setup. It achieves this by means of automatic scaling and Time Extension Recording™ (TXR™) along with a flexible input design.

Simply connect the logger to the signal to be recorded and press the button to begin recording. When the session is complete press the button to stop. It is that simple!

On-line display of data

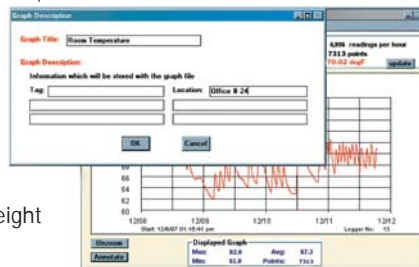
Automatic update of Y data at cursor position

Plot area with value and time data shown on the X and Y axis

Graph Statistics

Annotate button

Click the annotate button to add a title and descriptive information to your graph. This information can be stored and printed with a graph.



Plot graphs and view statistics quickly and easily when you download data from Simple Logger® to your computer. Scale and time axis update automatically.

Click and drag your mouse to zoom up the desired area of the graph for better viewing the Min, Max and average statistics at the bottom of the graph update automatically with zoom window.

Click the annotate button to add a title and descriptive information to your graph. This information can be stored and printed with the graph.

AEMC Data Logging Made Simple...Simple Logger®

Process loggers — available with thermocouple, thermistor, 4 to 20mA and DC voltage inputs

Electrical loggers — available in standard and plug-in AC voltage models and AC current models

Clamp-On Current Loggers — available with split jaw or flexible sensor



Model L320 ▲

Thermocouple Loggers

Connection via color-coded miniature thermocouple jacks

Model L610 (Type J) 32 to 1382°F (0 to 750°C)

Model L620 (Type K) -328 to 2282°F (-200 to +1250°C)

Model L630 (Type T) -328 to 662°F (-200 to +350°C)

Thermistor Loggers

Measures temperature with internal or external thermistor

Model L605 Internal or External Thermistor

Internal -4 to +158°F (-20 to 70°C)

Internal/External -4 to +212°F (-20 to 100°C)

4-20 mA Logger

Autorangeing, programmable scale and units with standard terminal strip input

Model L320 0 to 25 mAdc

DC Voltage Loggers

Programmable scale and units with recessed safety banana jack inputs

Model L410 0 to 100 mVdc

Model L430 0 to 10 Vdc

Each unit includes: 9V Alkaline battery, windows based graphing and analysis software (CD-ROM), 6 ft DB9 RS-232 serial cable, and user manual.



Don't forget to order current probes for current loggers.
See pages B39-B41



AC Current Loggers

True RMS measurement with recessed safety banana jack input, optional current probe required

Model L100 0 to 1 Vrms input
0 to 10,000 Arms based on probe

Model L110

0 to 1 Arms input
0 to 3,000 Arms based on probe

AC Voltage Loggers

True RMS measurement with recessed safety banana jack inputs

Model L205
0 to 25 Vrms input (stray voltage)

Model L230
0 to 300 Vrms input

Model L260
0 to 600 Vrms input

AC Exception Voltage

True RMS measurement to capture short term events such as sags, swells and dropout connection via recessed safety banana jacks

Model L215 0 to 250 Vrms

Model L100 ▲

Clamp-On AC Logger

True RMS measurement with split jaw opening (1.65")

Model CL600
0 to 600 Arms

Flexible Current Probe Loggers

Fit around hard-to-reach or oversized conductors. Perfect for continuous-monitoring applications, with six-month recording capability on a single battery. Compact logging module mounts via Velcro® pads.

Available in four models, each with 24" or 36" AmpFlex™ sensor.

Models AL24-2500 & AL36-2500
5 to 250 or 2500 Arms

Models AL24-5000 & AL36-5000
5 to 500 or 5000 Arms



Model CL600 ▲



Model AL36-2500 ▲

Ordering Information

Order #	Mfg #	Description	Price
MP2113.50	2113.50	Model L100, RMS Current, 0 to 1 Vac Input	
MP2113.85	2113.85	Model L110, RMS Current, 0 to 1 Aac Input	
MP2116.05	2116.05	Model L205, Stray Voltage w/Leads, 0 to 25.5 Vac Input	
MP2116.07	2116.07	Model L215, RMS Voltage, 0 to 250 Vac Input	
MP2113.93	2113.93	Model L230, RMS Voltage w/Leads, 0 to 300 Vac Input	
MP2113.94	2113.94	Model L260, RMS Voltage w/Leads, 0 to 600 Vac Input	
MP2113.97	2113.97	Model L320, DC Current, 4 to 20 mAdc Input	
MP2114.05	2114.05	Model L410, DC Voltage, 0 to 100 mVdc Input	
MP2114.07	2114.07	Model L430, DC Voltage, 0 to 10 Vdc Input	
MP2114.17	2114.17	Model L605, Temperature, Temperature-Internal/External Thermistor	
MP2116.15	2116.15	Model L610, Temperature, J Thermocouple	
MP2116.16	2116.16	Model L620, Temperature, K Thermocouple	
MP2116.17	2116.17	Model L630, Temperature, T Thermocouple	
MP2116.11	2116.11	Model CL600, Clamp-On, RMS Current, 0 to 600 Arms Input	
MP2113.72	2113.72	Model AL24-2500, RMS Current, 250/2500A, 24" AmpFlex™	
MP2113.73	2113.73	Model AL36-2500, Current, 250/2500A, 36" AmpFlex™	
MP2113.74	2113.74	Model AL24-5000, RMS Current, 500/5000A, 24" AmpFlex™	
MP2113.75	2113.75	Model AL36-5000, RMS Current, 500/5000A, 36" AmpFlex™	

Dickson Portable Dataloggers

Affordable PC-based recording of temperature, temperature and humidity, or electronic signals

This datalogger series, 24526E, is accurate and easy to use, with models offered for temperature only, temperature and humidity, and multiple variables. All versions feature:

- User-Selectable Recording Times and Ranges
- Compatibility with Microsoft Windows™ 95, Windows™ NT, Windows™ 98
- Easy-to-Use "DicksonWare" Software (Purchase Required with Initial Order) for Integrating Data into Documents and spreadsheets
- Can be Used with 24533E Multipoint Monitor

24526E-1 and -2 log temperature only. Both utilize an internal digital temperature sensor, and the dual-channel 24526E-2 also accepts an external k thermocouple sensor. The temperature/humidity model, 24526E-3, is equipped with internal temperature and humidity sensors. 24526E-4 monitors multiple variables—such as pressure, air movement, flow, fluid, level, electrical properties, moisture, gas concentrations, and more—via voltage or current inputs. You can configure its two channels as one voltage and one current, two voltage, or two current.

Each Unit Includes: 3V lithium coin cell battery and instruction manual **NOTE:** Windows™ compatible software and interface cable not included; must accompany initial purchase of datalogger.



▲ SP100

Specifications

Temperature Range (internal sensor):	-40 to +176°F (-40 to +80°C)
Accuracy:	±1.8°F (±1°C) from 14 to 176°F (-10 to +80°C)
Temperature Range (external sensor):	-238 to 400°F (-150 to 204°C)
Accuracy:	±1.8°F (±1°C) from 15 to 176°F (-10 to 80°C)
Voltage Input (24526E-4 only):	0 to 5 mV (removable screw-type terminal block)
Current Input (24526E-4 only):	0 to 20 mA (removable screw-type terminal block)
Humidity Range:	0 to 95% RH (non-condensing)
Accuracy:	±2% RH at 77°F (25°C); ±3% RH from 41 to 122°F (5 to 50°C)
Data Storage:	16,256 sample points, dual-channel; 32,512 points, single-channel
Sample Interval:	10 seconds to 24 hours, user-selectable
Dimensions:	3.1 x 2.1 x 0.9" (79 x 53 x 23 mm)
Power:	Replaceable 3V lithium coin cell battery

Ordering Information

Order #	Mfg #	Description	Price
MP24526E-1	SP100	Temperature Datalogger, Single-Channel	
MP24526E-2	SP150	Temperature Datalogger, Dual-Channel	
MP24526E-3	TP120	Temperature/Humidity Datalogger	
MP24526E-4	ES120	PCV/DCMA Datalogger, Dual-Channel	
MPA015	A015	Datalogger Software and Interface Cable	
MPA150	A150	Remote Temperature Probe	
MPA713	A713	Water-Resistant Pouch	

Dickson Multipoint Monitor

Download data from your instruments without leaving your desk

- Connects up to 8 instruments to one PC, from up to 1000 feet away
- Nine monitors connected together create a network of up to 64 instruments
- User-selectable recording times and ranges
- Microsoft Windows™ 95, 98, and NT compatible

The 24533E allows you to simultaneously monitor multiple Dickson instruments in real time, from one PC. Compatible with 24526E-1, -2, -3, -4 dataloggers; 24024T-5, 24494E, 24495E, and 24021T-01, -02, -03.

Each Unit Includes: AC adapter, 25' extension cable, and instruction manual.



MP100 monitor not included

To preview the datalogger software, download free demo at www.loggerdemo.com.

Specifications

Ambient Operating Range:	32 to 122°F (0 to 50°C); 0 to 95% RH, non-condensing
Power Supply:	120 VAC adapter with 9V-battery back up and LED status indicator
Software Requirements:	Windows™ 95, 98, or NT
Size/Weight:	4.26 x 8.08 x 2.25"/1 lb, 3 oz (not including adapter)

Ordering Information

Order #	Mfg #	Description	Price
MP24533E	MP100	Multipoint Instrument Module	
MPA015	A015	Datalogger Software and Interface Cable	
MPX025	X025	25' Extension Cable (Connects 24533E to Logger)	
MPX050	X050	50' Extension Cable (Connects 24533E to Logger)	
MPX100	X100	100' Extension Cable (Connects 24533E to Logger)	
MPX999	X999	1000' Extension Cable (Connects 24533E to Logger)	

NEW Dickson Super Compact Data Logger

- Monitoring Goods in Storage
- Logging Conditions while Goods are in Transit
- Mapping and Evaluating HVAC/R Systems
- Place these Loggers in Shipping Containers, Refrigerators, Freezers, Coolers, Ventilation Ducts, and Just About Anywhere You Need to Monitor Temperature and Humidity Conditions



So compact, slightly larger than a quarter, you can put this data logger just about anywhere. So inexpensive, less than \$75 each, you can monitor all of your critical applications without sacrificing accuracy and ease of use. These loggers feature great accuracy specifications and use our popular DicksonWare™ software. Kit includes 12 temperature and humidity data loggers.

Specifications

Temperature Range:	-4 to +158°F (-20 to +70°C)
Temperature Accuracy:	±1.8°F (±1°C) over range -4 to +158°F (-20 to +70°C)
Humidity Range:	0 to 95% RH
Humidity Accuracy:	±2% over range 10 to 90% RH
Data Capacity:	3840 Sample Points
Sample Interval:	Variable from 10 sec. to 24 hour in 10 sec. increments
Battery Type/Life:	Lithium 3V, approximately 1 year
Response Time:	10 minutes to 63% of full scale
Download Time:	30 sec., typical with logger full
Approvals:	CE
Enclosure:	Polycarbonate
Memory:	EEPROM
Dimensions:	1.35" x 1.1" x 0.485" (3.43 x 2.79 x 1.23 cm)
Weight:	0.44 ounces (12.4 grams)
Includes:	3V Lithium battery

Ordering Information

Order #	Mfg #	Description	Price
MPSK500	SK500	Temperature Logger - 12 pack	
MPTK500	TK500	Temperature & Humidity Logger - 12 pack	
MPA015	A015	DicksonWare™ Software & Download Cable	
MPA025	A025	DicksonWare™ SECURE Software & Download Cable (21CFR11 compliant)	

Calibration Information

Order #	Mfg #	Description	Price
MPN300	N300	NIST Traceable Calibration 3-pt. (new unit)*	
MPN100	N100	NIST Traceable Calibration 1-pt. (new unit)*	
MPN400	N400	A2LA Accredited Calibration 3-pt. (new unit)*	

*Calibrations are per unit

NEW Dickson Pro Series Temperature/Humidity Data Logger

- Monitoring Food, Drug and Chemical Storage
- Checking Building Automation Systems
- Monitoring Storage of Critical Equipment and Computers
- Recording Conditions in Cleanrooms, Chambers and Incubators



TR320

Specifications

Temperature Range:	-4 to 158 °F (-20 to +70 °C)
Temperature Sensor:	Digital Temperature Sensor
Temperature Accuracy:	±1.8 °F (±1°C) over range +14 to 158 °F (-10 to +70°C)
Humidity Range:	0 -95%RH non-condensing
Humidity Sensor:	Monolithic Humidity Sensor
Humidity Accuracy:	±2% RH at 77°F (25°C)
Data Storage:	32,512 (16,256 per channel)
Display:	1.2" x 0.9" 2.5 digit LCD, TN, Reflective
Sample Interval:	Variable from 10 sec. to 24 hours in 10 sec. increments
Dimensions:	3.77" x 1.43" x 1.09" (9.58cm x 3.63cm x 2.77cm)
Dew Point:	Calculated Range -22 to +122°F (-30 to +50 °C)
Power Supply:	"AA" 3.6V lithium, user replaceable
Approvals:	CE
Weight:	2.0oz. (57g.)
Includes:	"AA" 3.6V Lithium battery

Ordering Information

Order #	Mfg #	Description	Price
MPSR300	SR300	Temperature Pro-Series Display Logger	
MPTR320	TR320	Temperature & Humidity Pro-Series Display Logger	
MPA015	A015	DicksonWare™ Software & Download Cable	
MPA025	A025	DicksonWare™ SECURE Software & Download Cable (21CFR11 compliant)	

Accessories and Calibration Options

Order #	Mfg #	Description	Price
MPN300	N300	NIST Traceable Calibration 3-pt. (new unit)	
MPN100	N100	NIST Traceable Calibration 1-pt. (new unit)	
MPN400	N400	A2LA Accredited Calibration 3-pt. (new unit)	
MPSW400	SW400	Logger Calibration Software*	
MPN520	N520	Certificate of Validation	
MPA715	A715	Locking Wall Mount Case	
MPA719	A719	Water Resistant Pouch	
MPX050	X050	50' Cable – For remote connection of logger to PC	
MPX025	X025	25' Cable – For remote connection of logger to PC	

*Not for use with DicksonWare% SECURE

E

Recorders and Data Acquisition

NEW Dickson Temperature & Humidity Data Logger

- High-Speed USB 2.0 Connectivity
- One Step Data Transfer Using Removable FLASH Memory Cards
- MIN/MAX Display
- High/Low Alarm



Introducing our best data loggers ever! Dickson's new series of Temperature and Humidity Data Loggers with Jumbo Display offer all of the key features you've been looking for including: High/Low Alarm, Min/Max Display, Super high-speed USB 2.0 Connectivity, One Step Data Transfer using removable SD FLASH memory cards, and much more!

Featuring our fastest data download ever! Download data in just seconds, using new USB port compared to 1.5 minutes using standard serial port.

Specifications

Humidity Range:	0 to 95% RH
Humidity Accuracy:	±2% RH @ 77°F (25°C)
Internal Temperature Range (SM300/SM320):	-4 to +158°F (-20 to +70°C)
Internal Temperature Accuracy:	±1.8°F (±1°C)
External K-Thermocouple Probe (SM320/SM325):	
External Temperature Accuracy:	±1.8°F (±1°C) logger only; ±7.9°F (±4.4°C)
Logger Temperature Range:	-4 to +158°F (-20 to +70°C)
Probe:	-40 to +185°F (-40 to +85°C), 0 to 100% RH non-condensing
Display: 2	.0" x 1.375" V.A. 4 digit LCD, TN positive mode, Reflective
Power Supply - Type:	Batteries, 4 AA Alkaline; AC adapter - optional
Sample Interval:	Variable from 1 sec. to 24 hours in 10 sec increments
Number of Samples:	32000 (16000 per channel) measurements
Alarms - Types:	Audible alarm
Dimensions - Enclosure:	3.98" (10.11 cm) x 3.0" (7.62 cm) x 1.531" (3.89 cm)
Weight:	9 oz.
Includes:	Batteries, instruction manual

Ordering Information

Order #	Mfg #	Description	Price
MPTM320	TM320	Midsize Display Temperature & Humidity Data Logger	
MPTM325	TM325	Midsize Display Temperature & Humidity Data Logger w/ Remote Probe	
MPSM300	SM300	Midsize Display Temperature Data Logger	
MPSM320	SM320	Midsize Display Temperature Data Logger w/ Remote Probe	
MPSM325	SM325	Midsize Display Temperature Data Logger w/ 2 External K-Thermocouple Probes	

Accessories

Order #	Mfg #	Description	Price
MPA016	A016	DicksonWare™ Software and USB Cable	
MPA015	A015	DicksonWare™ Software and Serial Cable	
MPA026	A026	DicksonWare™ SECURE Software and USB Cable (21CFR11 Compliant)	
MPA025	A025	DicksonWare™ SECURE Software and Serial Cable (21CFR11 Compliant)	
MPA210	A210	Removable FLASH Storage Device	
MPA200	A200	Card Reader & Removable FLASH Storage Device Kit	
MPN520	N520	Certificate of Validation	
MPSW400	SW400	Logger Calibration Software	
MPR157	R157	AC Adapter (recommended for continuous display)	
MPA834	A834	RH Calibration Kit (12% & 75%) for use with TM125 only	
MPA867	A867	Probe Dust Filter (TM325 only)	
MPA880	A880	10' Probe Extension Cable	
MPA881	A881	50' Probe Extension Cable	
MPA882	A882	100' Probe Extension Cable	

Dickson Pressure Logger

- Pressure Ranges to 500 PSI
- Waterproof Stainless Steel Case
- 5 Year Battery
- Measurew PSI, ATM, Bar Milli Bar, In H₂O, Ft H₂O, mm H₂O, mm HG, In Hg, Pascal, Kilo Pascal



PR100

Specifications and Ordering Information

Mfg #	PR100	PR300	PR500
Pressure Ranges	0-100 PSI	0-300 PSI	0-500 PSI
Accuracy	±1% of Full Scale		
Operating Conditions	+ 32 to + 122° F (0 to +50° C) 0 to 100% RH		
Sample Point Storage	7,936 Points		
Resolution	0.1 PS		
Sample Interval	User Selectable from 10 Sec. to 24 Hr.		
Enclosure	3	16 Stainless Steel	
Fitting	1/4" NPT Tread, 5/8 Hex		
Battery Type	Lithium 3.6V (replaceable), 5 Yr. Typical Battery Life		
Sample Interval	User Selectable from 10 Sec. to 24 Hr.		
Dimensions	1.064" x 1.975" Dia. (2.70 cm x 5.02 cm Dia)		
Weight	4.0 oz.		
Order #	MPPR100	MPPR300	MPPR500
Price			

Dickson's Pressure Logger records pressure from 0 to 100 PSI, 0 to 300 PSI or 0 to 500 PSI, has a waterproof stainless steel case and a 5 year battery. Its compact size, smaller than a hockey puck, is perfect for tight locations and outdoor applications. Eliminate changing chart paper and pens. View data in real time or download data. User-friendly "DicksonWare" software makes it simple to integrate recorded pressure data into documents and spreadsheets.

Recommended Accessories

Order #	Mfg #	Description	Price
MPA015	A015	DicksonWare Software and Download Cable	
MPA791	A791	Pressure Fitting Accessory Kit	
MPA793	A793	Fire Hydrant Adapter Kit	
MPRO22	R022	Filter Kit (Includes snubber)	
MPA792	A792	Steam Pressure Pigtail	
MPA717	A717	Locking Case	

Hioki Data Loggers

- Compact Size
- 2 Year Battery Life (all but 3631)
- Waterproof Construction (3632 only)
- Up to 16,000 Measurement Data Points
- Several Types Available for a Wide Variety of Applications
- Special Software Bundled with the Communication Base
- Non-volatile Memory

▶ **3631-20**



The Hioki data loggers are compact business card size loggers weighing only 70g each. Though small in size, these loggers allow easy recording of up to 16,000 data points and use non-volatile memory to prevent data from being lost when batteries are exhausted. Seven logger models are provided for recording temperature, humidity, DC current and DC voltage in a wide variety of applications. Data recorded with the loggers can be managed on a computer through the communication base, and can then be displayed as either a graph or a data list. The communication base enables storing of the recording time, interval, start, end, method and comments in the instrument's memory.

Specifications

General Specifications	
Memory Data:	16000 data points (8,000 per ch. 3631-20)
Recording Interval:	2 to 30 seconds, 1 to 60 minutes, 14 settings
Power Supply	Two 1.5 V, LR03 (AAA) alkaline dry cell batteries, lifetime approx. 2 year (recording interval 1 minute)
Size / Weight:	57 x 74 x 19.5 mm (WHD) / 70 g
3631-20	
Inputs:	2 Channel, Temperature / Humidity
Temperature:	-20 to 70°C (internal sensor) -40°C to 180°C (external sensor)
Accuracy:	±0.5°C (0 to 35 °C)
Humidity:	20.0 % to 95.0 % rh
Accuracy:	±0.5%
Each unit Includes: LR03 alkaline dry cell batteries (2), 9630 Humidity Sensor (1), Operation Manual	
3632-20	
Inputs:	1 Channel, Temperature (Internal Sensor)
Temperature:	-20°C to 70°C
Accuracy:	±0.5°C (0 to 35 °C)
Each Unit Includes: LR03 alkaline dry cell batteries (2), Operation Manual	
3633-20	
Inputs:	1 Channel, Temperature (External Sensor not included)
Temperature:	-40°C to 180°C
Accuracy:	±0.5°C (0 to 35 °C)
Each unit Includes: LR03 alkaline dry cell batteries (2), Operation Manual	
3634-20	
Inputs:	1ch, 0.00 to 20.00 mA
Accuracy:	±0.8 % rdg. ±5 dgt
Each Unit Includes: LR03 alkaline dry cell batteries (2), 9632 CONNECTION CABLE (1), Operation Manual	
3635-24, -25, -26	
Inputs:	3635-24: -500 to + 500 Mvdc 3635-25: -5.000 to + 5.000 VDC 3635-26: -50.00 to +50.00 VDC
Accuracy:	+/- 0.8% of rdg. +/- 5 dig
Each Unit Includes: LR03 alkaline dry cell batteries (2), 9632 CONNECTION CABLE (1), Operation Sensor	

Ordering Information

Order #	Mfg #	Description	Price
MP3631-20HK	3631-20	Humidity Logger	
MP3632-20HK	3632-20	Temperature Logger (1ch internal sensor)	
MP3633-20HK	3633-20	Temperature Logger (1 ch external sensor)	
MP3634-20HK	3634-20	Process Logger (0-20 mADC)	
MP3635-24HK	3635-24	Voltage Logger (-500 to + 500 mVDC)	
MP3635-25HK	3635-25	Voltage Logger (-5.000 to + 5.000 VDC)	
MP3635-26HK	3635-26	Voltage Logger (-50.00 to +50.00 VDC)	
MP3911-20HK	3911-20	Communication Base (required to download to PC)	

Optional Accessories

Order #	Mfg #	Description	Price
MP9631-01HK	9631-01	Temperature Sensor (Molded type, 1 m)	
MP9631-11HK	9631-11	Temperature Sensor (Molded type, 5 m)	
MP9631-21HK	9631-21	Temperature Sensor (Molded type, 10 m)	
MP9631-02HK	9631-02	Temperature Sensor (Needle type, 1 m)	
MP9631-03HK	9631-03	Temperature Sensor (Sheath type, 1 m)	
MP9631-04 HK	9631-04	Temperature Sensor (Lug terminal type, 1 m)	
MP9631-14 HK	9631-14	Temperature Sensor (Lug terminal type, 5 m)	
MP9631-24 HK	9631-24	Temperature Sensor (Lug terminal type, 10 m)	
MP9631-05 HK	9631-05	Temperature Sensor (Molded resin type, 30 mm)	
MP9630 HK	9630	Humidity Sensor (1 m length)	
MP9630-01HK	9630-01	Humidity Sensor (5 m length)	
MP9630-02HK	9630-02	Humidity Sensor (10 m length)	
MP9637HK	9637	RS-232C Cable (9-pin to 9-pin, cross, 1.8 m)	
MP9638HK	9638	RS-232C Cable (9-pin to 25-pin, cross, 1.8 m)	
MP9632HK	9632	Connection Cable (1 m length)	
MP9633HK	9633	Connection Cable (ø 2.5 mm plug, 1 m length)	
MP9634HK	9634	Connection Cable (ø 3.5 mm plug, 1 m length)	

E

Recorders and Data Acquisition