

Logic Beach HyperLogger™

- Expandable to 24 Analog or 48 Digital Inputs
- 150 Samples/Second in a Portable Package
- Icon-Based HyperWare Software, Included
- 5 Standard Built-In Alarms, 2 Relays, 3 TTL Level All Software Controllable
- Accepts VDC, Thermocouples, 4-22 mA, RTDs, Thermistors, Digital I/O, Events and Frequency.
- Isolated Inputs Available with 18 Bit Resolution Eliminates Common-Mode Problems

The Hyperlogger provides six interface ports, providing up to 48 analog and/or digital channels are easily accessible. Each port accepts Interface Modules ranging from four channel 'Universal' Interface Modules (configurable for 6 thermocouple types, 15 ranges of VDC or ADC) to a family of other modules for isolated analog inputs, frequency, event, RTD, thermistor, counter I/O as well as modules for removable PCMCIA Data Memory modules, 14.4 Kbaud modem modules, cellular phone, and RF modems.



HL-1 ▲

Each Unit Includes: HyperWare for Windows, one four-channel Analog input module, one CJC sensing terminal strip adapter, one general purpose digital input, RS232 cable, DB-9 and DB-25 adapter, 120VAC power adapter, and manual

Note: HL-200 also includes RPS-1 rechargeable power supply

Specifications

A/D Converter:	12 bit plus sign (13 bit) SAR converter. ± 0.1% RDG + 1 bit
Sampling Rate:	150+ Samples per Second
Display:	Two line, 16 character per line LCD
Power Consumption:	9 VDC nominal; provided by 6 internal D-cells
External Power (optional):	Accepts 9–16 VDC, 10–20 AC from any semi-regulated external source
Operating Temperature:	-10 to 60°C (14 to 140°F)
Storage Temperature:	-30 to 70°C (-22 to 158°F)
Enclosure:	Gasketed rain-proof plastic, liquid-tight wiring fittings and I/O Wiring Plate (NEMA-4X Equiv)
Dimensions/Weight:	10.5" W x 14" H x 6.5" D/10lbs with batteries

Module Specifications and Ordering Information

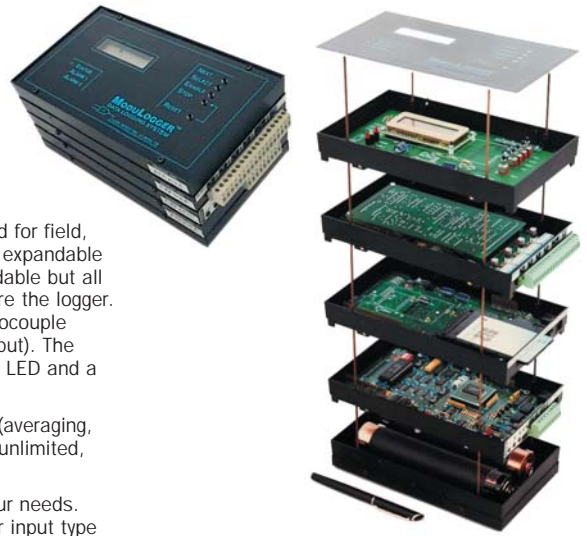
To order - Insert Number Code for Each Letter to Select Number - Order Example: MPH1/1-1-2-5114-8-LM101

A - **B** - **B** - **B** - **B** - **B** - **C** **NOTE: * Only fill in if required**

A	Base Unit
MPHL1	HyperLogger data logging system.
MPHL200	HyperLogger data logging system in NEMA-4X enclosure
B	Interface Module (Up to Additional 5 Interface modules)
1	Analog interface module, 4-channel J, K, E, T, S, ±20 mV to ±30 VDC, ±200 µA to ±200 mA
2	Frequency and digital Interface Module, 4-channel, 5Hz to 30 KHz, 300 mV p-p min, 4 outputs
4	Resistance, RTD, Thermistor Interface Module, 4-channel, 100Ω, 1000Ω 2-, 3- and 4 wire RTD, 10 KΩ thermistor
5	PCMCIA card Interface Module*
5144	PCMCIA card Interface Module and 14.4 internal modem
7	Isolated analog interface module, 4-channel, J, K, E, T, S, ±20 mV to ±30 VDC, ±200 µA to ±200 mA isolated
8	Digital Interface Module, 8-channel, input: contact closure or TTL, output 5 VDC
9	Serial Bus Interface Module, RS232, RS485, SDI-12
C	Options
Leave Blank	None
PSM2	Sensor excitation power supply module, door mount.
Recommended Accessories	
MPMC-50	PCMCIA Memory Card; 50,000 to 80,000 Samples
MPMC-200	PCMCIA Memory Card; 200,000 to 300,000 Samples
MPMC-400	PCMCIA Memory Card; 400,000 to 600,000 Samples
MPPD-2	PCMCIA Drive, Supplied with Software. RS-232 and USB
MPLBI-MSS-101	Ethernet to Serial Adapter Box (10/100 Base T)

Logic Beach ModuLogger™ and ModuLogger™ “MINI”

- Compact User-Configurable
- Expandable to 44 Analog or 48 Digital Inputs
- Up to 150 Samples/Second
- Easy-to-Operate with Graphical Software, Included
- 4 Standard Built-In Alarms
- Fully Configurable for a Variety of Inputs
- Isolated Inputs Available with 18 Bit Resolution



The ModuLogger™ is a modular, self-contained data logging and alarming system designed for field, production floor and lab data collection. Select the ModuLogger for applications requiring expandable I/O or the ModuLogger “MINI” for a ready-to-go 4 channel logger (‘MINI’ I/O is not expandable but all other ModuLogger options are available.) CPU module, options are then added to configure the logger. It also includes four alarm outputs, four universal analog inputs (configurable for 6 thermocouple types, 15 ranges of DC voltage or 7 ranges of DC current, and one digital count/event input). The CPU module also provides two isolated alarm relay outputs, a TTL alarm output, a Status LED and a regulated, current-limited 5 VDC output all controllable under software.

HyperWare Software offers extremely powerful processing capabilities for data reduction (averaging, min/max, etc) mathematical manipulation (algebraic, trig, time integrals, etc), as well as unlimited, User-programmable, intelligent data logging capabilities.

Additional modules stack onto the CPU module, building a layered instrument to meet your needs. Modules are self-identifying in HyperWare and configurable via the HyperWare software for input type and range within the module’s capability.

Specifications

A/D Converter:	12 bit plus sign (13 bit) SAR converter. ±0.1% Rdg + 1 bit
Sampling Throughput Rate:	150+ samples per second (analog input to memory)
External Power (optional):	Accepts 9–16 VDC, 10–20 VAC from any semi-regulated external source
Operating Temperature:	-10 to 60°C (14 to 140°F)
Storage Temperature:	-30 to 70°C (-22 to 158°F)
Enclosure:	Dust sealed
Dimensions/Weight:	8.8" x 4.8" x 2.2" WHD (no batteries) 1.5 lbs without batteries, 3 lbs with batteries

Each Unit Includes: HyperWare for Windows, one four-channel Analog input module, one CJC sensing terminal strip adapter, one general purpose digital input, RS232 cable, DB-9 and DB-25 adapter, 120VAC power adapter, and manual.

ModuLogger MINI Ordering Information

To order - Insert Number Code for Each Letter to Select Number	
A - B - C - D	
A Base Unit	
MNL1	ModuLogger MINI logger with 16k samples and four analog inputs
MNL1EXM	ModuLogger MINI logger with 80k samples and four analog inputs
B Interface Module	
5	PCMCIA card Interface Module
5144	PCMCIA card Interface Module and 14.4B internal modem
C Top	
MLT	Logger top cover without display
MLD	Logger top cover with 2 line 16 character display
D Back	
MLBACK	Logger back cover
MLBATT	Logger back cover with batter pack module, 6 D cells.
MLBATT2	Logger back cover with batter pack module for sensor excitation, 5, 10, 15 and 24 VDC
Recommended Options	
MPLBI-MSS-101 Ethernet to Serial Adapter Box (10/100 Base T)	

Each Unit Includes: HyperWare for Windows, one four-channel Analog input module, one CJC sensing terminal strip adapter, one general purpose digital input, and manual

ModuLogger Ordering Information

To order - Insert Number Code for Each Letter to Select Number	
Order Example: MPHLL1/1-1-2-5114-8-LM101	
A - B - B - B - B - C - D NOTE: * Only fill in if required	
A Base Unit	
MPMLCPU	ModuLogger CPU with 16k samples, 4 analog inputs
MPMLCPUEXM	ModuLogger CPU with 80k samples, 4 analog inputs
B Interface Module (Up to Additional 5 Interface modules)	
1	Analog interface module, 4-channel J, K, E, T, S, ±20 mV to ±30 VDC, ±200 µA to ±200 mA
2	Frequency and digital Interface Module, 4-channel, 5 Hz to 30 kHz, 300 mV p-p min, 4 outputs
4	Resistance, RTD, Thermistor Interface Module, 4-channel, 100Ω, 1000Ω 2-,3- and 4 wire RTD, 10 kΩ thermistor
5	PCMCIA card Interface Module
5144	PCMCIA card Interface Module and 14.4B internal modem
7	Isolated analog interface module, 8-channel, J, K, E, T, S, ±20 mV to ±30 VDC, ±200 µA to ±200 mA isolated
8	Digital Interface Module, 8-channel, input: contact closure or TTL, output 5 VDC
C Top	
MLT	Logger top cover without display
MLD	Logger top cover with 2 line 16 character display
D Back	
MLB	Logger back cover
MLB	Logger back cover with batter pack module, 6 D cells.
MLB2	Logger back cover with batter pack module for sensor excitation, 5, 10, 15 and 24 VDC
Required Option	
MPCCombo-Pak	HyperWare Software, RS232 cable, DB-9 and DB-25 adapter, 120VAC power adapter, and manual
Recommended Options	
MPLBI-MSS-101	Ethernet to Serial Adapter Box (10/100 Base T)

E

Recorders and Data Acquisition

Commtest Portable Recorder/Datalogger

- Full Graphical, Backlit Display
- Truly Hand-held and Portable
- Includes Software for Data Management
- High-Resolution Measurements
- Accepts Industry-Standard Sensors

This new system offers far more than any single datalogger you can find. It's more flexible, more accurate, and easier to use than most, even those priced higher. Its data-management software is unique; lets you upgrade the system firmware via the Internet! And, unlike many other dataloggers, it's a true portable—hand-held, weighs just three pounds, operates on batteries.

MAS™ for Data Downloading, Storage, Graphing, Printing, and More

This Windows™-based software package is powerful, but exceptionally "user friendly." You can download data to a PC in a matter of just seconds, then graph or print it in a variety of ways. You also can save it in spreadsheet format for custom graphing and statistical analysis.

But what sets MAS™ apart is that it provides an incredibly easy and convenient way to upgrade your datalogger as operating enhancements become available. Just log on to the manufacturer's web site and download the latest version of PROFLASH™, the base unit's internal software. Then connect the base unit to your PC and execute a few quick keystrokes—the entire process takes only a few minutes. And this service is free for one year after purchase of the instrument!

Each Unit Includes: Base unit, protective outer boot, charger/adapter, download cable, measurement analysis software (MAS), owner's operation manual.

PC System Requirements for MAS:

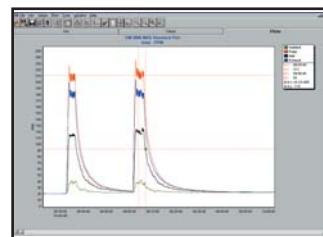
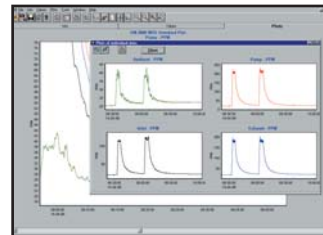
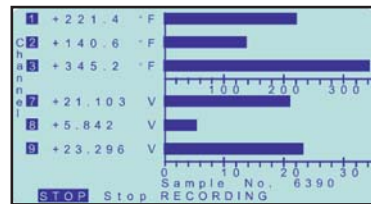
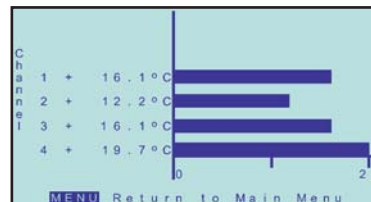
- 386 processor or higher
- 1 MB minimum available hard drive space
- 4 MB RAM minimum

Specifications

Ranges:	
23503E and 23503E-1	
T Type T/C:	-418 to +743°F (-250 to 395°C)
E Type T/C:	-418 to +1823°F (-250 to 995°C)
J Type T/C:	-346 to +2183°F (-210 to 1195°C)
K Type T/C:	-418 to +2498°F (-250 to 1370°C)
Voltage:	±5 VDC and ±30 VDC (user selectable)
Common Mode Range: ± 30 VDC (voltage channels only)	
23504E-1	
3-wire RTD:	-328 to 1562°F (-200 to 850°C)
23505E-1 and 23505E-2	
Current Range:	4 to 20 mA DC
Resolution	
Temperature:	0.1 F or C (1°F or °C below -148°F)
Voltage:	±5 VDC: 200 µV, ± 30 VDC: 1 mV
Current:	2 µA
Accuracy	
Temperature:	±0.1% of reading
Voltage:	± 0.3% of reading
Current:	± 0.1% of reading



▲ MMS3000/T6V4



Ordering Information

Order #	Mfg #	Description	Price
MP23503E-1	MMS3000-T4	4-Channels, Temperature, T/C	
MP23503E	MMS3000/T6V4	6-Channels, Temperature, T/C / DCV	
MP23504E-1	MMS3000-RTD6	6-Channels, Temperature, RTD	
MP23505E-1	MMS3000-GP4	4-Channels, 4–20 mA DC Input	
MP23505E-2	MMS3000-GP8	8-Channels, 4–20 mA DC Input	

NOTE: 6-channel T/C and/or 4-channels VDC (total of 6-channels at any one time maximum).